

YOSHIDA

Closer to the hearts of
your patients.

See more.

Understand more.



Visual Communication System

MS

Mielscope+





Doctor

- 4K ultra-high resolution with up to 80× magnification
- 350–600 mm working distance
- Deep depth of field
- Blue Light Mode

Dental hygienist

- Simple camera positioning and intuitive operation
- Distance Adjustment Mode
- Real-time sharing of intraoral information
- Staff training and skill enhancement



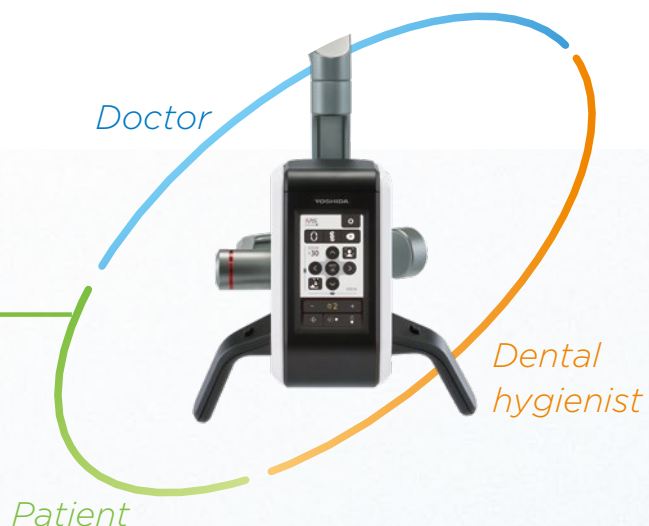
Mielscope

Supporting Comprehensive, High-Quality Patient Care

Mielscope+ is a visual communication system designed to enhance understanding between clinicians, staff, and patients. By delivering clear, high-quality images in real time, it supports accurate diagnosis, effective treatment, and confident communication.

Patient

- Enlarged images for clearer patient understanding
- Wide Range View Mode (3×)
- Vertical and horizontal image flip
- Still image and video recording



Features That Streamline Dental Communication Designed for Precision. Build for easy of use.

By combining high-resolution imaging with intuitive controls, **Milescope+** supports high-precision dentistry and seamless visual communication among clinicians, staff, and patients.

Auto Zoom



With a single touch, the image enlarges to a preset magnification and easily returns to the minimum level, enabling efficient control of the field of view.



80x

8x

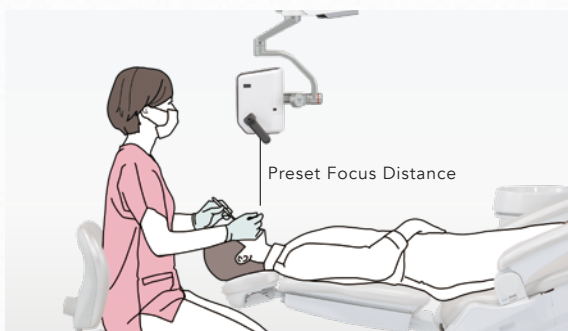
16x

30x

Distance Adjustment Mode



By presetting the focal distance, the system maintains a consistent working distance, supporting standardized clinical imaging.



Function button



A variety of operations are consolidated into a single function button, which opens a screen where users can access convenient features. These functions can also be customized to the handle switch.



Pause



Blue Light

Wide Range View Mode (3×).



Captures images at a fixed 3× magnification, making it ideal for recording facial appearance and overhead views of clinical procedures.



Auto focus



Quickly adjusts focus with a single touch, delivering a clear, crisp image at the press of a button.



Illumination control

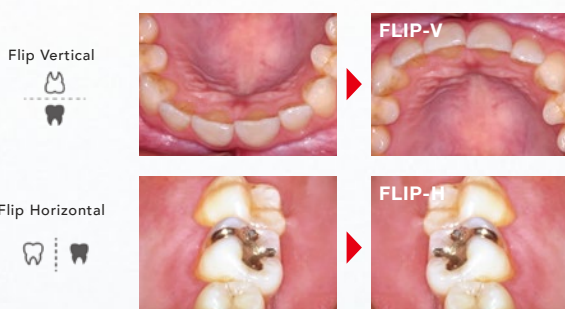


LED brightness adjustable in 10 steps.
44,000 lx (WD: 400 mm) to 20,600 lx (WD: 600 mm)

Image flip (vertical and horizontal)



Images can be flipped vertically or horizontally with a single touch, instantly presenting the optimal orientation for each procedure.



When the image is flipped, "Flip-V" and "Flip-H" are displayed in the upper-left corner.

Handle switches

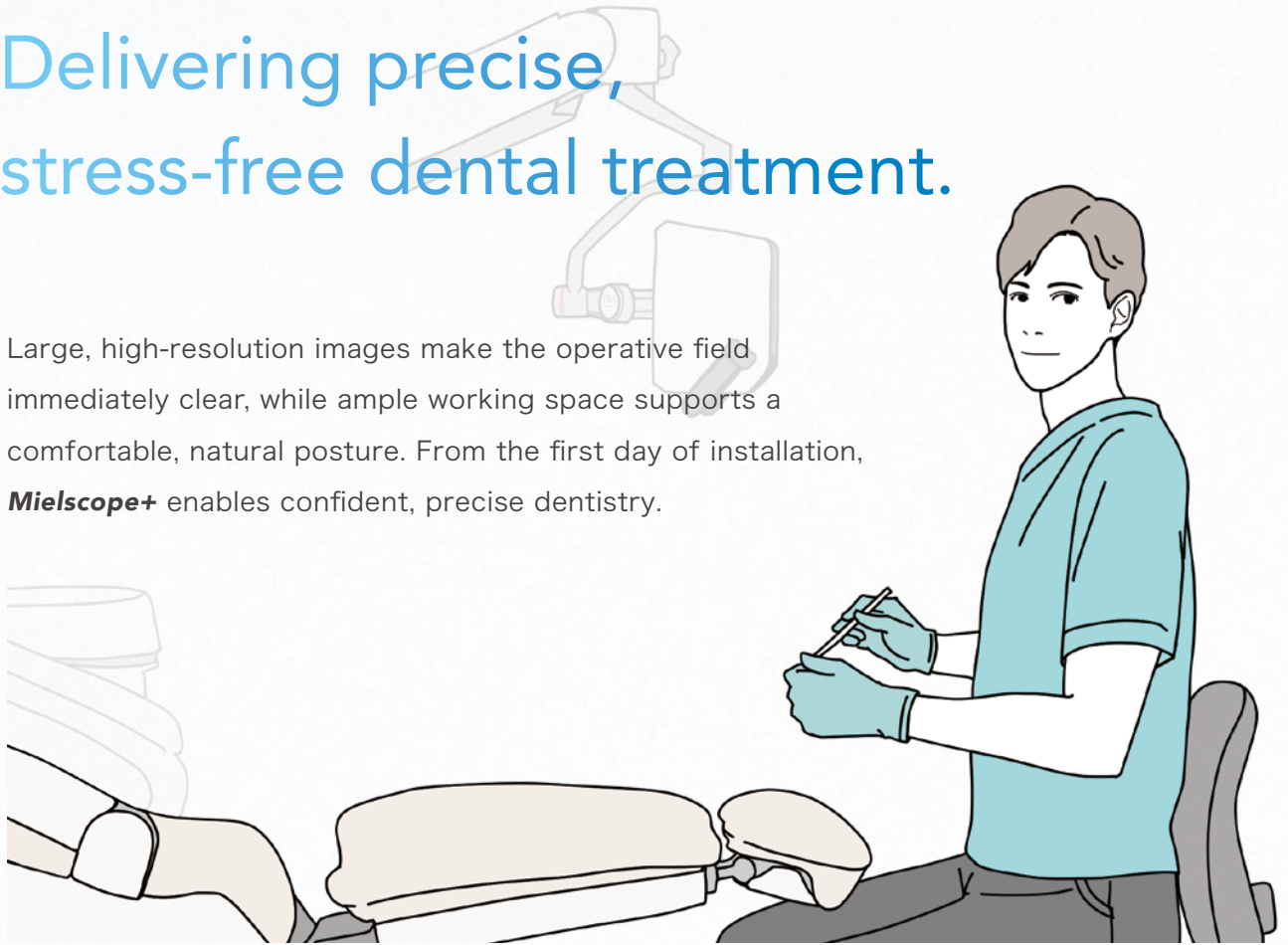
Operates in conjunction with the touch-panel directional keys (↑ Zoom In / ↓ Zoom Out / ⇌ Focus). The same operations can also be performed using the 4-Gang foot switch. *Functions such as Pause and Blue Light Mode can also be customized.



Doctor

Delivering precise, stress-free dental treatment.

Large, high-resolution images make the operative field immediately clear, while ample working space supports a comfortable, natural posture. From the first day of installation, **Mielscope+** enables confident, precise dentistry.



4K high-definition imaging with up to 80× magnification.

Supports early lesion detection and highly precise treatment.

Offers magnification up to 80×. With high-definition, 4K images, it delivers reliable treatment without relying on intuition. And because there is no need to look through an eyepiece, **Mielscope+** can be used alongside magnifying loupes.



Secondary caries



Cracks



Ill-fitting prosthesis

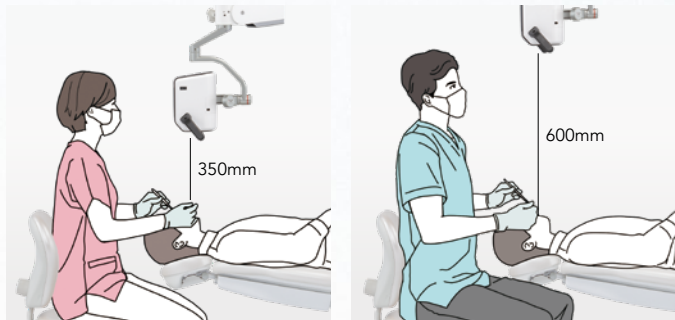


Attrition

Comfortable Working Distance (350–600 mm)

Keeps the camera out of the operative field, balancing comfort and practicality.

The long working distance keeps the camera out of the operative field, providing ample space and allowing treatment in a natural posture regardless of the clinician's body type. This supports sustained performance during extended procedures.



Deep depth of field

Full-Range Focus for Reliable Surgical Procedures

A wide depth of field allows clear focus across the entire oral cavity, from anterior to posterior regions. Minimal focus adjustment is required, making it especially suitable for surgical procedures and treatments covering broad operative areas.



Mielscope + *Entire arch in focus DSLR camera

Blue Light Mode for easier visualization

Clear visualization of composite resin margins enables more precise treatment.

Blue Light Mode enhances the visibility of composite resin restorations, making margins easier to identify. During aligner orthodontic attachment placement, it helps prevent overtreatment and residual resin by supporting precise removal of excess material.

*Visibility may vary depending on intraoral conditions.



Dental hygienist

Superior operability takes hygiene work to the next level.

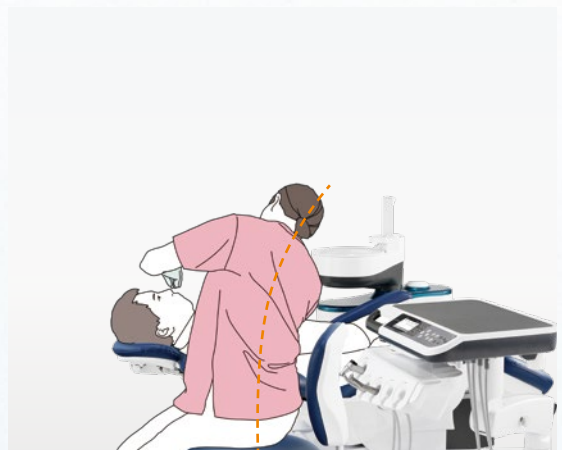
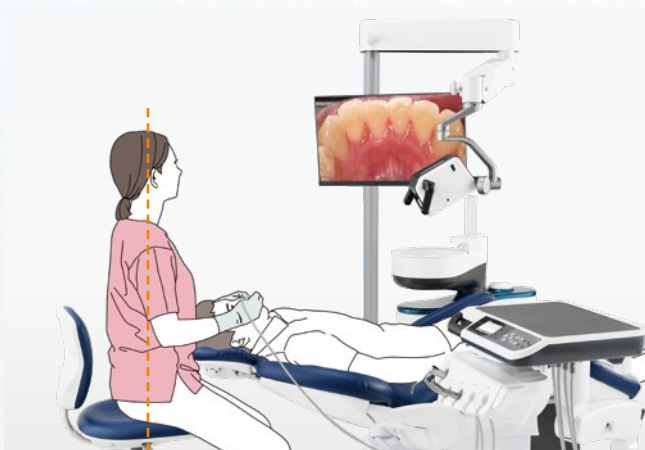
Clear, magnified images enable high-quality patient explanations, while sharing the operative field on the monitor supports seamless, collaborative team-based care.



Easy camera positioning and operation

Simple positioning supports a correct, fatigue-reducing posture during treatment.

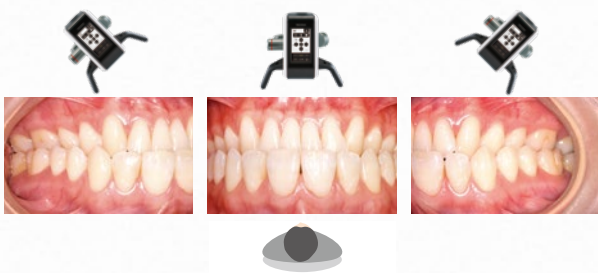
The three-axis arm enables intuitive camera control and smooth access to the operative field. Procedures can be performed in a natural posture without leaning in or adopting awkward positions, reducing physical strain.



Distance Adjustment Mode

Ideal for standardized imaging, eliminating operator-dependent variation.

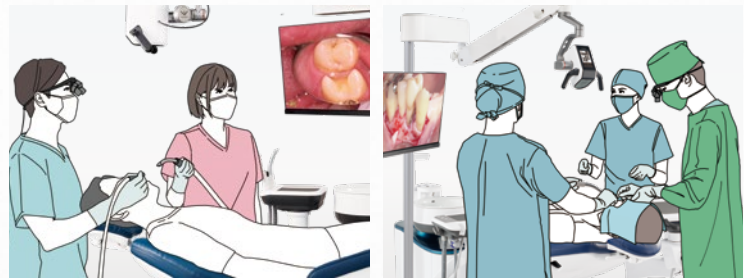
By fixing the working distance, **Milescope+** supports standardized intraoral imaging, allowing accurate comparison of pre- and post-treatment images while eliminating operator-dependent variation.



Shared intraoral information for seamless chairside support.

Seamlessly understands the clinician's intent, supporting team-based care.

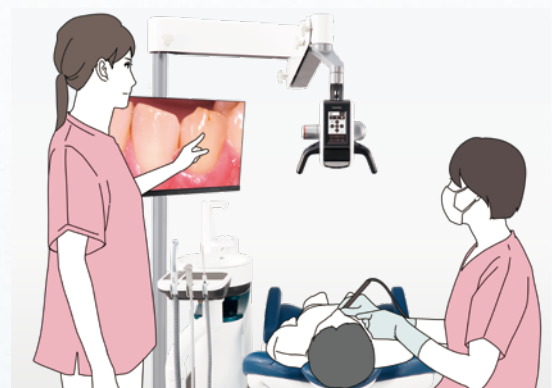
By sharing the operative field on the monitor, assistants can easily assess the treatment status and provide appropriate support, even during procedures involving multiple staff members.



A powerful tool for education and skill development.

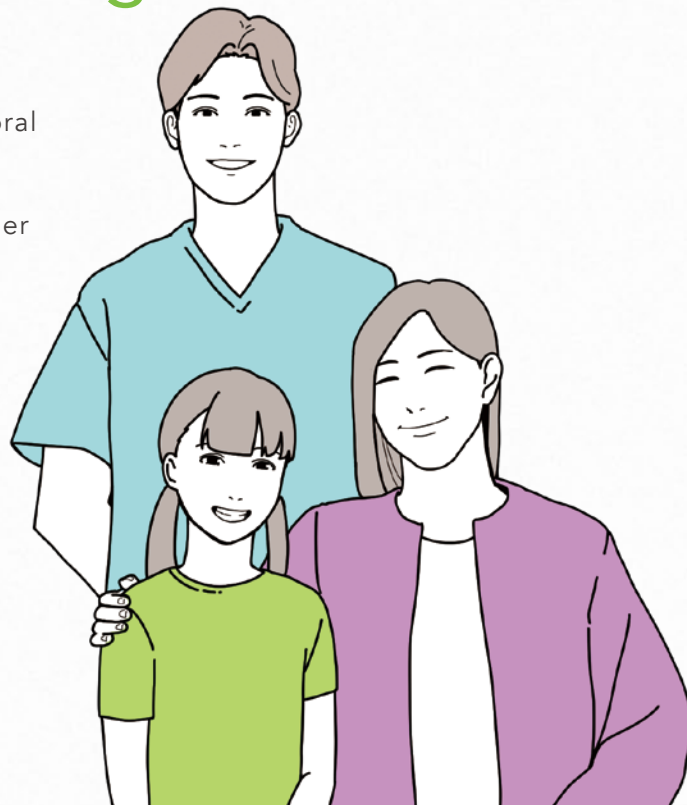
Learn even the most delicate procedural details through live and recorded images.

Without the need to look directly into the oral cavity, enlarged images displayed on the monitor allow effective learning, enhancing comprehension in the training of clinicians and new dental hygienists.



Enhancing motivation through visual understanding.

High-quality magnified images make intraoral conditions easy to see and understand, supporting clearer explanations and stronger patient engagement.



See and understand your oral health

Patients can instantly see and understand the condition of their own oral health.

Images far beyond what traditional hand mirrors can show allow patients to instantly understand their own oral health condition, encouraging greater involvement in treatment decisions.



Wide Range View Mode (3×)

Wide Range View Mode allows capture of a broader range of patient information.

Wide Range View Mode captures facial appearance and smile lines, while also supporting overhead views of procedures—helping patients better visualize treatment progress and outcomes.

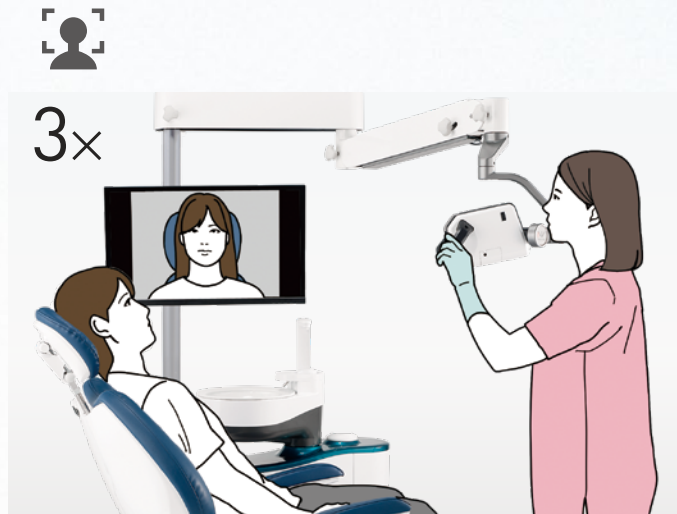


Image flip for clearer explanations

Instantly improves understanding of the area being explained.

With a single touch, images can be flipped vertically or horizontally, allowing clinicians to present the operative area in the most easily understood orientation for patients. Images can also be recorded in a flipped state for documentation.

Flip Vertical



FLIP-V



Flip Horizontal



FLIP-H



Still image and video recording

“Visual dentistry” builds trust and enhances patient satisfaction.

Continuous image and video recording supports smooth treatment and clearer explanations without the need for separate cameras or equipment, improving clinical efficiency and patient confidence.

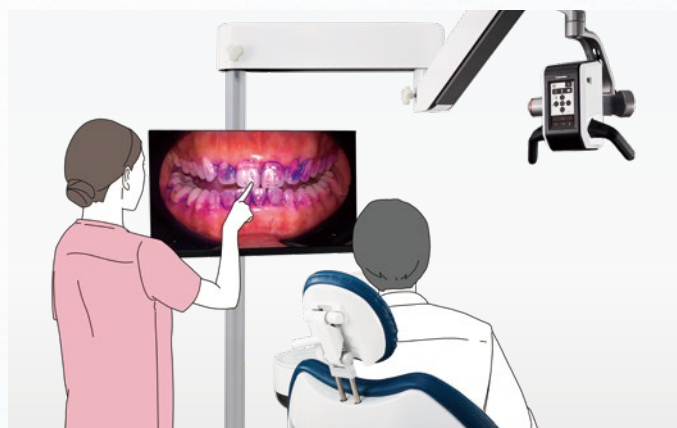


Image & Video Documentation Software

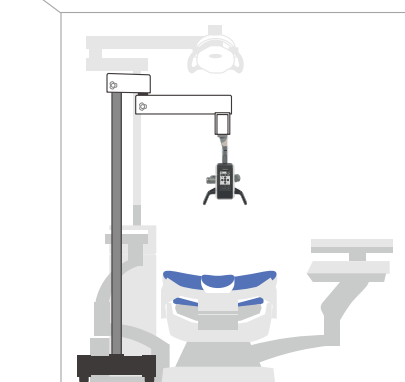


MultiCapture

This software supports the recording of videos and still images. It also enables the display of grid lines and other guides as needed for standardized imaging.



Installation image



YOSHIDA

THE YOSHIDA DENTAL MFG. CO., LTD.

Address 1-3-6 Kotobashi, Sumida-ku Tokyo, Japan 130-8516



[www.facebook.com/
YoshidaDentalManufacturing](https://www.facebook.com/YoshidaDentalManufacturing)



www.yoshida-net.co.jp/en