



Capturing Clarity, Displaying Precision:
Elevating Trust and Satisfaction Through Clear Insight.

Visual Communication System

MS
Mielscope

YOSHIDA

© THE YOSHIDA DENTAL MFG. CO., LTD.

Distributor

YOSHIDA

THE YOSHIDA DENTAL MFG. CO., LTD.

Address 1-3-6 Kotobashi, Sumida-ku Tokyo, Japan 130-8516



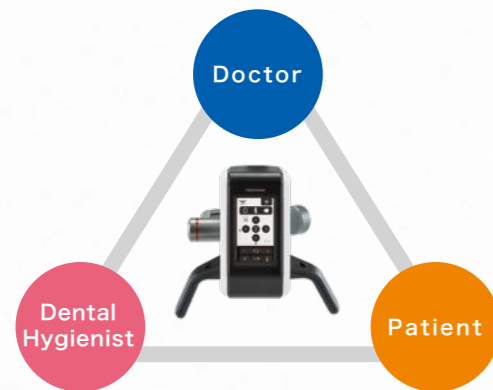
[www.facebook.com/
YoshidaDentalManufacturing](https://www.facebook.com/YoshidaDentalManufacturing)



www.yoshida-net.co.jp/en

With a view so clear and distinct, consultation flow effortlessly and smoothly.

Capturing the oral condition with stunning clarity, achieving 4K imagery with 80x high resolution. We've pursued user-friendliness with clear visibility and easy operation, catering to a wide range of scenarios. Meeting the demands of modern dental care for precision and facilitating seamless visual communication with staff and patients. Mielscope proposes a new approach to dental practice.



**Expanding clinical horizons,
Optical and Digital Prowess**

- Maximum Magnification 80x
- Auto Focus and Auto Zoom Function
- Vertical and Horizontal Flip Function
- Deep Depth of Field

**Stress-free,
Intuitive Operation**

- Utilizes a 3-section arm, allowing for multi-angle capturing.
- Working distance of 300-500mm.
- Intuitively operable touch panel.
- Allows for simultaneous use of monitor view and direct line of sight.

**Streamlining Treatment with
Convenient Features**

- Blue light function
- Easy recording of still images and videos
- Can also be used as an intraoral camera
- Unified management of clinic IT systems

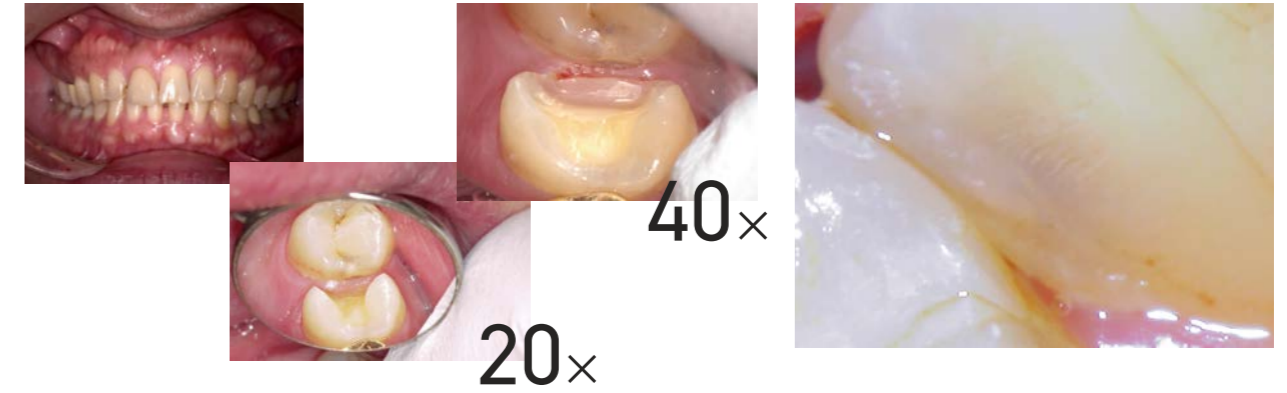
Expanding Clinical Horizons High resolution

Experience crystal-clear, high-resolution visuals that vividly capture the surgical area. Our advanced optical and digital performance ensures a detailed view, eliminating the need for special techniques.



Enhancing Healthcare with Advanced Diagnostic Capabilities: Maximum Magnification of 80x

Experience crystal-clear quality even at a maximum of 80x magnification, enabling precise examination of teeth alignment and calculus while extending support to intricate root canal treatments. Elevate your treatments with high precision diagnostics, relying not just on intuition but on accurate visual insights.



Instantly switchable vertical and horizontal flip function

With just a simple touch, you can instantly flip the video both vertically and horizontally. This allows for displaying images in a patient-friendly orientation, significantly improving comprehension.



One-touch Auto Focus/Auto Zoom with a single button

With a single action, you can zoom in to the preset magnification and quickly focus. This allows for smooth continuation of treatment even if the patient or the practitioner moves.



Capturing detailed intraoral shots and expansive views with an effective deep depth of field

Thanks to a broad focal range, you can leverage high-quality images for various purposes, ranging from overall intraoral views to detailed enlargements of treatment areas.

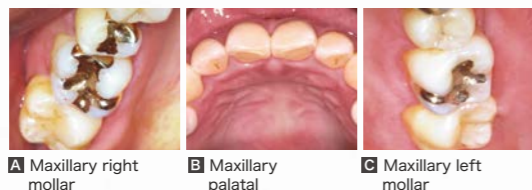
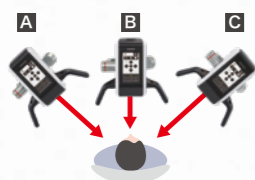


Intuitive Operation for Enhanced Usability

Milescope enables effortless and versatile capturing from your desired angles with intuitive controls. This not only provides spatial freedom but also allows you to continue treatment in a comfortable posture.

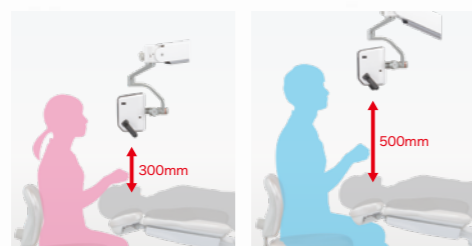
Utilizing a 3-Section Arm for Multi-Angle Capturing

Capturing the desired areas precisely without compromising the practitioner's posture. The flexibility provided by the 3-section arm allows for easy observation of various areas without the need for mirrors.



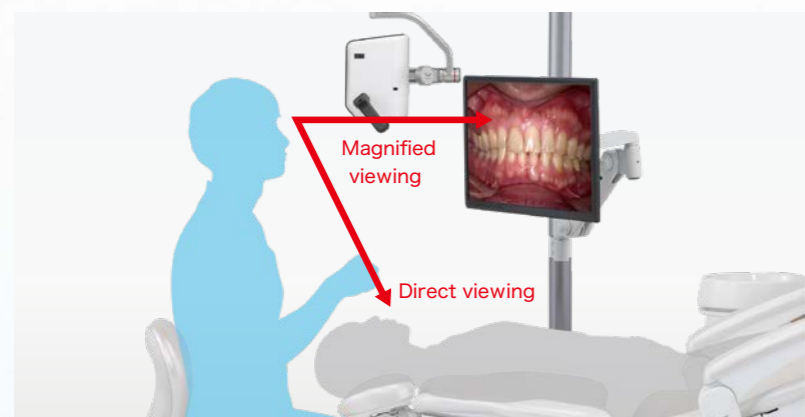
300-500mm: Wide range of working distance

It creates a consistently comfortable clinical workspace, irrespective of the doctor's physique.



Simultaneous use of direct viewing and monitor view

Optimal information is obtained from both direct viewing and magnified images. With the ability to maintain a steady position throughout treatment, practitioners can effortlessly transition their focus to confirm patients' expressions, effectively minimizing strain on the eyes and body.



Intuitively Operable Touch Panel and Handle Switch



Auto Focus **Auto Zoom** **Handle switch**

Auto Zoom instantly adjusts to the preset magnification with a single action, while Auto Focus rapidly brings the image into sharp focus. The handle switch allows for one-handed operation while viewing the video.

Blue Light Function for Enhanced Observability

The blue light makes it easier to observe the condition of resin fillings and other areas. It allows you to detect excess cement that is hard to see with the naked eye, supporting more precise treatment.



Seamless Recording of Still Images and Videos through Easy Operation

Recording still images and videos for clinical documentation can be seamlessly captured without disrupting procedures. With the optional USB foot switch (sold separately), hands-free recording is also achievable.



Precise treatment begins immediately upon installation of Mielscope

I wish I could magnify even more of the intricate procedure areas.

Using a mirror slows down the process during checkups.

I also want to clean up excess resin nicely.

If I keep peering into the patient's oral cavity for too long, my lower back starts to ache.

scene 1

Endo

Further enlarging the view of the root canal
You can treat while viewing the monitor, even for details that cannot be confirmed with a dental loupe

Easily adjust the magnification up to 80x with simple controls. Compatible with 4K monitors, our digital optical technology supports intricate endodontic treatments. Adjustable up to a maximum magnification of 80x with simple operation. Compatible with 4K monitors, digital optical technology supports delicate endodontic treatments, such as root canal enlargement and early detection of tooth cracks.



scene 2

Preparation

Improve the visibility of the surgical field for more accurate preparation.
Clearly displays the surgical field that cannot be seen directly.

Even in challenging areas like the upper palate side where visibility is limited, preparation is achievable without relying on mirror techniques. The use of image inversion allows for intuitive treatment, free from constraints related to hand orientation and movement.

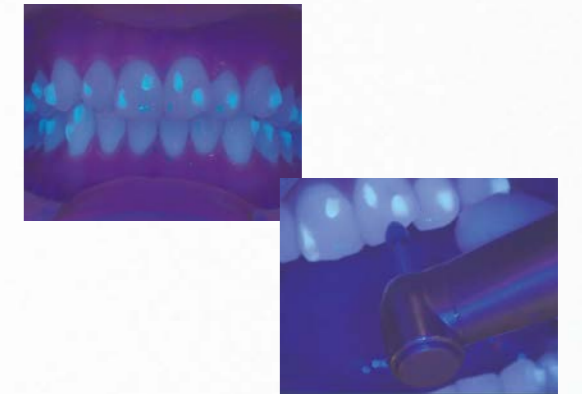


scene 3

CR

Visualize the CR (Composite Resin) with the blue light function.
Clearly visualize the boundaries of challenging CR filling areas with the blue light function

The blue light function allows for the visualization of filling areas, including direct bonding and composite resin (CR). It facilitates the removal of excess resin in mouthpiece-based orthodontic treatments, prevents over-treatment of CR, and proves beneficial in procedures like CR removal, residual check during secondary caries treatment, and patient explanations.



scene 4

Surgery

Usable regardless of the presence of a face shield
Conduct examinations effortlessly in a comfortable, natural posture, without concerns about positioning.

Because treatment can be performed without peering into hard-to-see areas during procedures such as difficult extractions and suturing during implant surgery, it reduces the burden on the lower back. Since it is not an eyepiece lens system, treatment can be carried out while wearing a face shield.



No special expertise is necessary.
All staff members can enhance their skills.

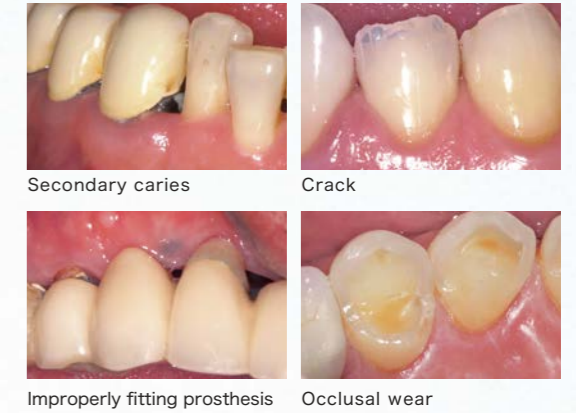


Examination

scene 1 Performing Intraoral examination while magnifying

Easily detect the small abnormalities which wasn't communicated in the primary complaint.

Since even the smallest of details can be clearly projected, secondary caries and other problems can be quickly detected during the intraoral examination. Taking a still image of the area facilitates reporting to the director.



TBI

scene 2 Images of the surgical site are reviewed on the spot.

No need to use a single-lens reflex camera. Image capture is faster than ever before.

With the capability to capture crisp still images, it seamlessly functions as an alternative to a single-lens reflex camera. The smooth workflow from capturing to explanation not only elevates patient comprehension but also eliminates the necessity for peripheral equipment such as accessories related to single-lens reflex cameras. This results in a notable enhancement in the efficiency of clinical procedures.



SC

scene 3 Explaining to the patient

Patients can visually comprehend the "before-and-after" aspects of the treatment with ease.

Utilizing clear and sharp images that remain easily discernible even when magnified in your explanations can heighten patient interest. Clarifying treatment details and offering before-and-after comparisons, which were traditionally challenging with conventional hand mirrors, can markedly elevate patient satisfaction.



SRP

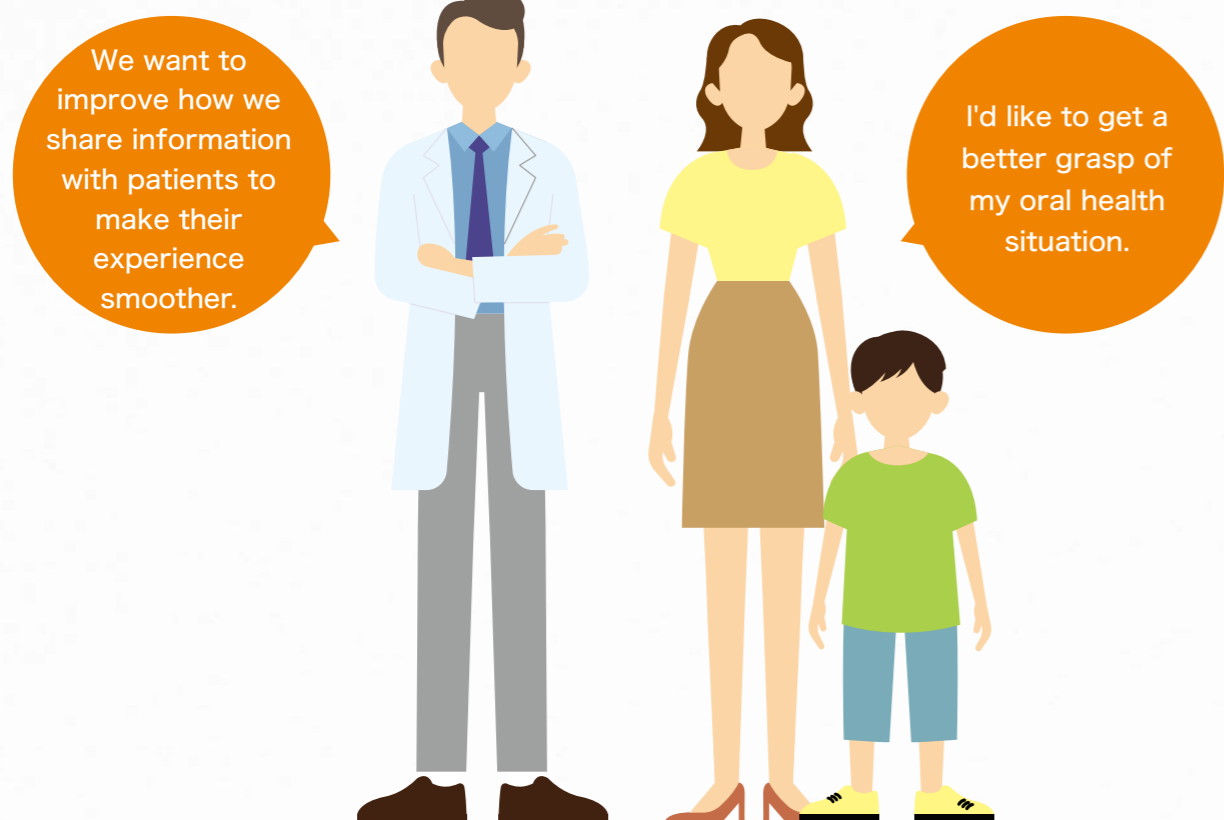
scene 4 Enlarging the display to visualize the treatment site.

Precision in treatment can be delivered from a comfortable position.

Due to the incorporation of a 3-section arm, the camera unit can move flexibly. This enables treatments to be performed accurately without the need to peer into hard-to-see areas, maintaining a comfortable and effective position. During SRP, enhancing the view of the treatment area facilitates a more precise oral health examination and subsequent treatments.



A spectrum of communication possibilities unlocked with vivid and easily comprehensible images.



scene 1

Communication

Explaining treatment to patients during procedures.

Utilizing the "Freeze Function" in images enhances patient understanding.

Using the "Freeze Function" on the monitor allows patients to visualize their oral condition, improving information sharing and enhancing overall treatment efficiency.



scene 2

Motivation

Conveying the importance of prevention.

Serving as a catalyst for patients to proactively embrace preventive dentistry, fostering a positive shift in behavior.

To guide patients toward preventive actions, it is crucial for them to accurately understand the disparity between their current oral health status and the ideal state. Various images can be obtained to support counseling that encourages patients' behavioral changes.

Sharing the perspective from a doctor's point of view: A novel approach to staff education.



scene 1

Skill up

When used for guidance during treatments by the resident doctor.

Real-time, specific advice made possible.

No need to peer over the shoulder of the dentist during treatment. Whether for the resident doctor or dental hygienists and new dental assistants, training and guidance are easily achievable.



scene 2

Education

When recording periodontal treatments or surgical procedures.

By sharing the treatment process, it contributes to the overall skill enhancement of the entire clinic.

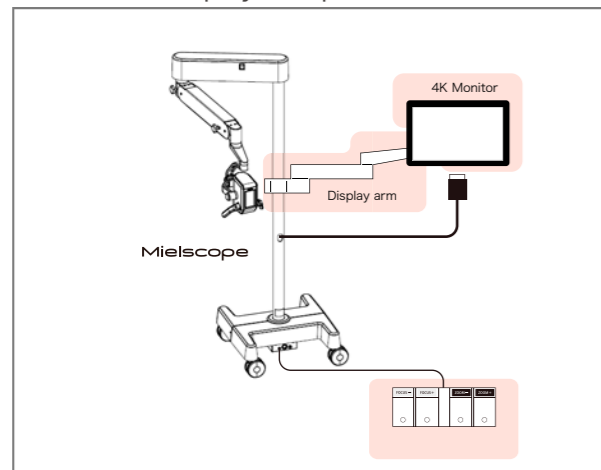
Recording and sharing the treatment process through videos or still images not only enhances individual awareness but also elevates the collective skills of the entire clinic staff. Reflecting on one's own treatments and sharing with other staff members are both effective practices.

Dimensions of Floor-Stand Model (with Casters)



Example Connection Setup

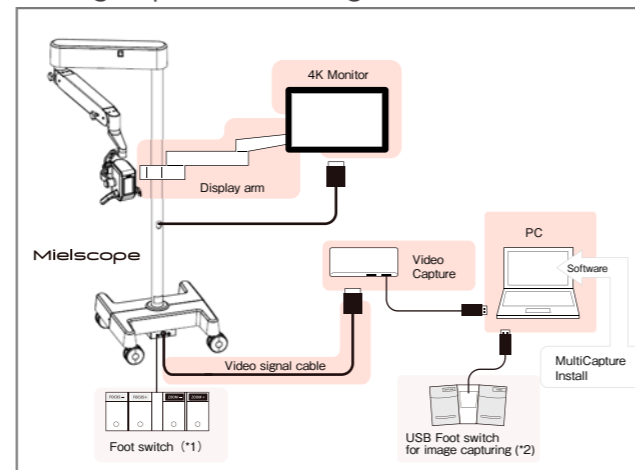
4K Monitor Display Setup



(1) Viewing on a 4K Monitor

When connected to our recommended 4K-compatible monitor, you can view the intraoral images captured by Mielscope in real time with 4K high definition. This supports high-precision treatment.

Storing Captured Still Images and Videos



(2) Saving Captured Still Images and Videos

The software 'MultiCapture' for recording still images and videos is included with the unit. By connecting to a recommended PC or similar device, you can record the capture data from Mielscope.

Monitors, PCs, and other connection devices are not included with the product. For recommended items, please contact a Yoshida dealer.

(*1) A foot switch is available (optional) for adjusting the camera's zoom and focus.

(*2) A USB foot switch for capturing photos and videos is available (sold separately).